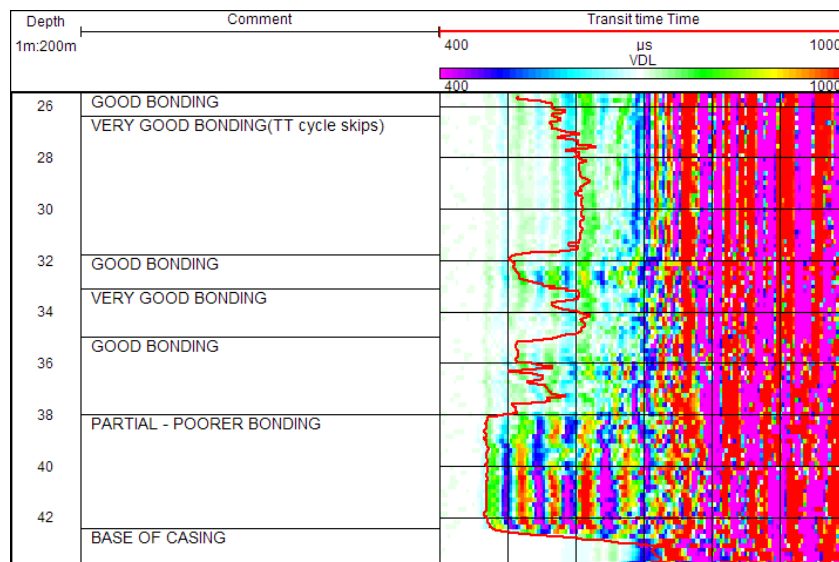




CEMENT BOND TOOL

Tool overview

The sonic tool may be used to assess the condition of the cement/grout bond around steel lining. Where the lining is completely free and unbonded the received sonic signals are of a high (100%) amplitude with signals arriving early. In steel lining that is bonded the received sonic signal is highly attenuated due to energy loss through the grout into the formation. In this case the amplitudes of the first arrivals are low, the lower the amplitudes the better the bonding. Under good bonding conditions these early lines of the VDL are faint, light coloured or non-existent.



Logging conditions

2–5m/min
Centralised

Borehole Conditions

Diameter 80–600mm
Fluid filled
Steel or plastic* lined

Features and benefits

- Useful for assessing condition of grout
- Provides information on where good and poor bonding areas are

*In optimum conditions can confirm the presence

Specifications

Size	2455 x 60mm
Weight	22kg
Sampling rate	Variable (500 samples at 4ms or slower)
Resolution	16 bit; Record length: min 2ms
Gain settings	16 levels
Max. Temperature	80°C

Why European Geophysical Services?

European Geophysical Services offers excellent and reliable field service coupled with many years of geophysical interpretation experience, efficient data processing and high-quality reporting. All our field operators are graduate geologists or geophysicists with data acquisition and interpretational experience able to give on site analysis and interpretations. For more information, please call 01939 210710 or email office@europeangeophysical.com.