



ACOUSTIC IMAGER (TELEVIEWER) TOOL

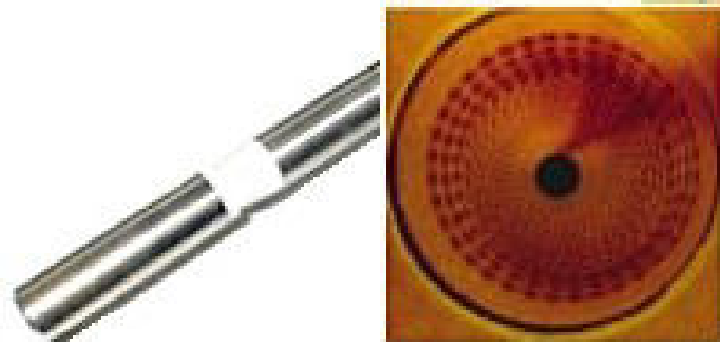
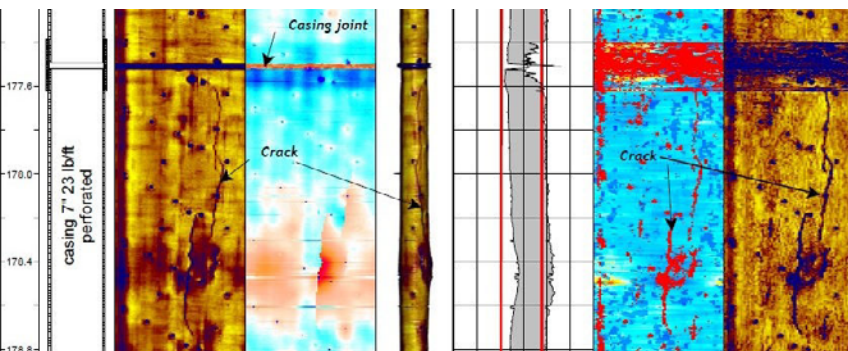
Casing Evaluation

The **Acoustic Imager** produces an image of the borehole wall or casing using the travel time and amplitude of an acoustic signal transmitted and received by a rotating ultrasonic sensor in the tool.

The amplitude of the reflection from the casing is representative of the elastic properties of the casing.

The travel time is used to determine exceptionally accurate borehole diameter data, which makes the tool ideal for casing inspections to detect:

- Inner corrosion
- Outer corrosion
- Wall / casing thickness
- Identify internal deposits / encrustation
- Pipe deformity or buckling



Specifications

Size:	1 600 x 60mm
Weight:	6 kg
Tilt:	0°- 90°
Azimuth:	0°- 360°
Vertical resolution:	User defined up to 0.5mm
Horizontal resolution:	User defined up to 360 measurements/ revolution
Rotation speed:	Up to 35 revolutions per second
Caliper resolution:	0.08mm
Max. temperature:	70°

Borehole Conditions

Minimum diameter 76mm
Minimum diameter 500mm

Logging Conditions

0.5 - 2 m/min
Centralised