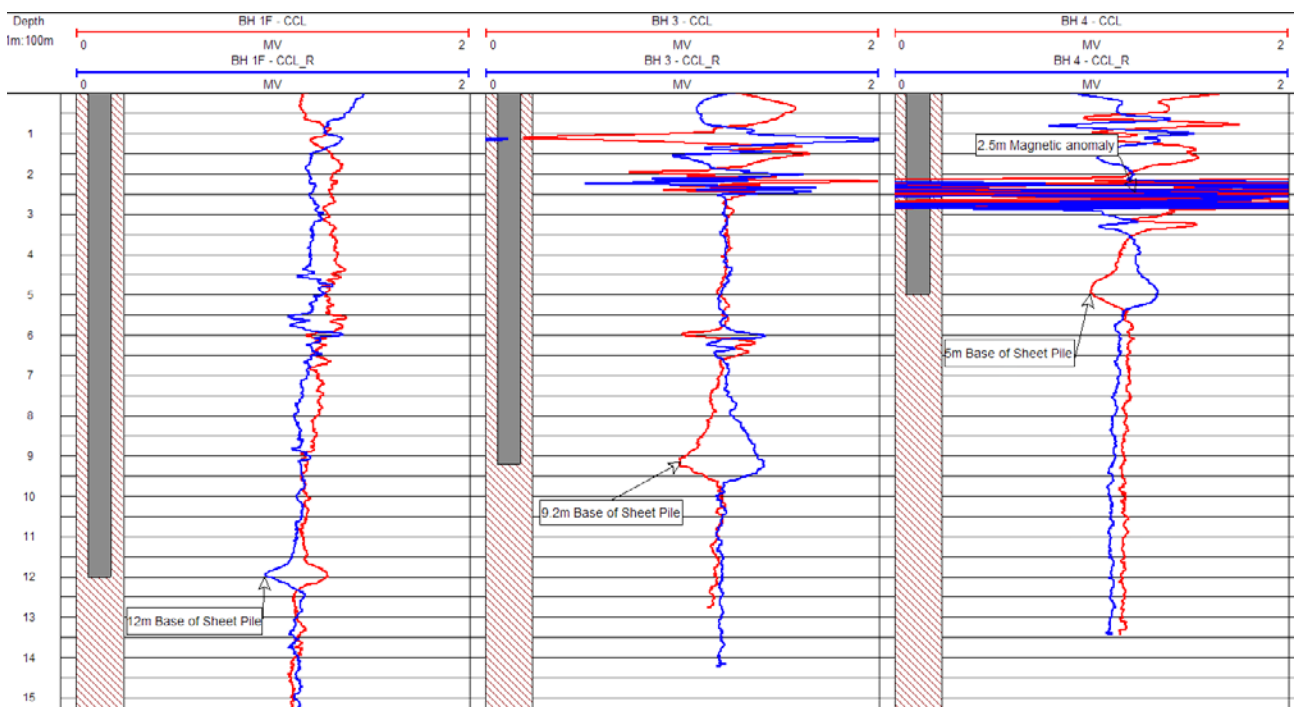
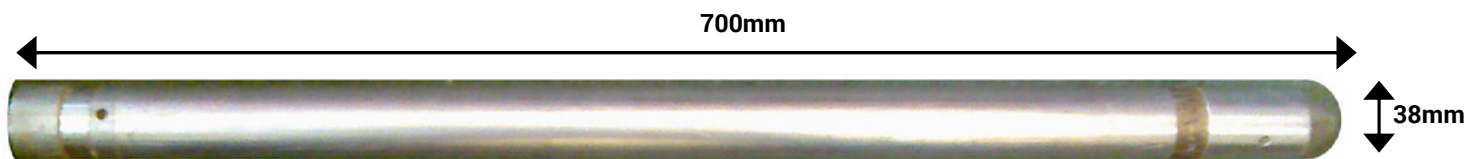




CASING COLLAR LOCATING TOOL

This tool measures changes in magnetic flux due to the presence of magnetic material and is used to determine the position of steel casing, its joints and other changes in the mass of magnetic material.



Depth to base of sheet piles measured with the CCL tool

Specifications

Size: 700 x 43 mm
Weight: 3.8kg
Max. temperature: 80°C
Max. pressure: 20MPa

Borehole Conditions

BH needs to be <0.5m from pile

Minimum diameter 50mm
Dry or fluid filled
Unlined or plastic lined

Logging Conditions

2 - 5 m / min
Free running