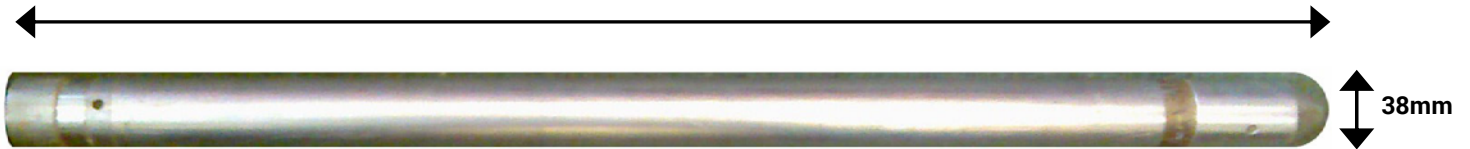




CASING COLLAR LOCATING TOOL

This tool measures changes in magnetic flux due to the presence of magnetic material and is used to determine the position of steel casing, its joints and other changes in the mass of magnetic material.

700mm



Specifications

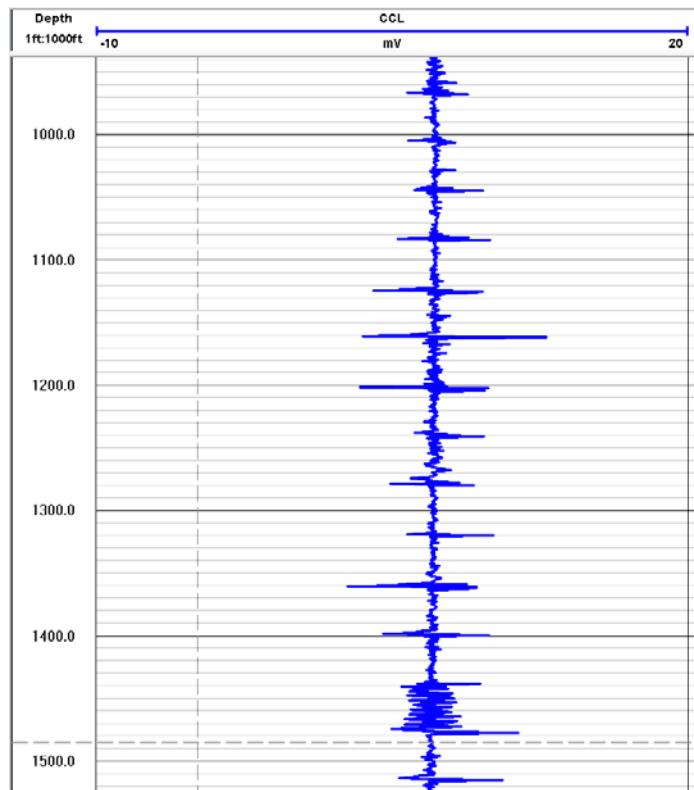
Size: 700 x 38mm
Weight: 3.8kg
Max. temperature: 80°C
Max. pressure: 20MPa

Borehole Conditions

Minimum diameter 50mm
Dry or fluid filled
Unlines, steel or plastic lined

Logging Conditions

2 - 5 m / min
Free runnig



Casing collars pick up by CCL tool