



DUAL SPACED FOCUSED RESISTIVITY TOOL

This tool measures the resistivity of the material surrounding the borehole.

The Focused Resistivity tool provides resistivity logs with finer vertical resolution and a deeper depth of investigation than a Normal Resistivity tool.

Performance is also improved in higher conductivity mud, saline water and higher resistivity formations.

The response of this log is a function of porosity, mineralogy and pore water quality.

In metal lined boreholes the resistivity can give qualitative information on the condition of the casing and may be used to identify areas of increased corrosion or encrustation.

2370mm



Specifications

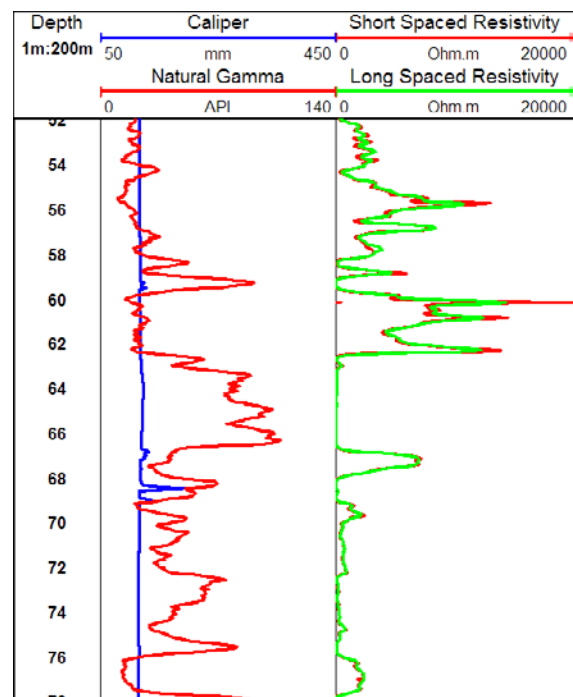
Size: 2370x 38mm
Weight: 7.0kg
Range: 1 to 10,000 Ohm.m
Max. temperature: 80°C
Max. pressure: 20MPa

Logging Conditions

4 - 9 m / min
Free runnig

Borehole Conditions

Minimum diameter 50mm
Fluid filled
Unlined



Example focused resistivity log showing increased resolution over a normal resistivity tool