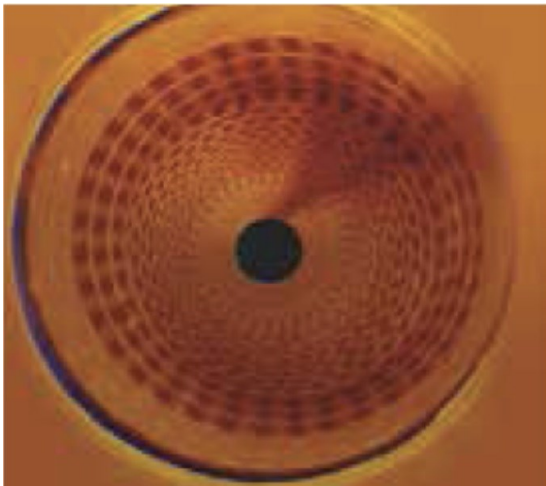




ACOUSTIC IMAGER (CASING EVALUATION)

Tool overview

The acoustic imager produces an image of the borehole wall or casing using the travel time and amplitude of an acoustic signal transmitted and received by a rotating ultrasonic sensor in the tool. The amplitude of the reflection from the casing is representative of the elastic properties of the casing. The travel time is used to determine exceptionally accurate borehole diameter data, which makes the tool ideal for casing inspections to detect: inner corrosion, outer corrosion, wall/casing thickness, identify internal deposits/encrustation, pipe deformity or buckling.

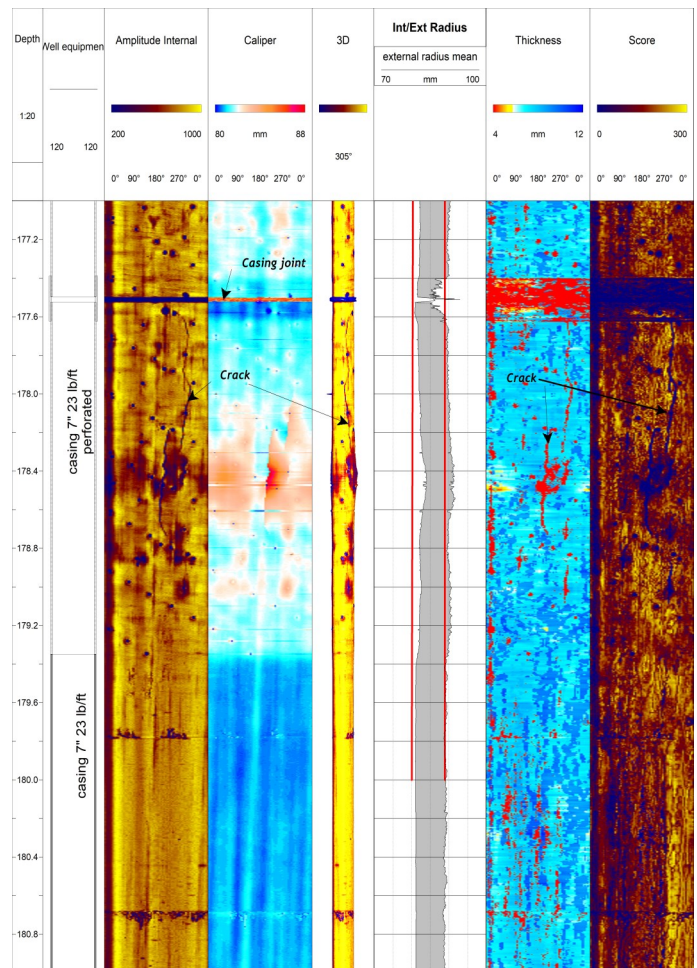


Logging conditions

0.5–2m/min
Centralised

Borehole Conditions

Fluid Filled
Min. diameter 76mm
Max. diameter 500mm



Specifications

Size	1600 x 60mm
Weight	6kg
Tilt	0°–90°
Azimuth	0°–360°
Vertical resolution	User defined up to 0.5mm
Horizontal resolution	User defined up to 360 measurements/
Rotation speed	Up to 35 revolutions per second
Caliper resolution	0.08mm
Max.temperature & Pressure	80° 200bar

Why European Geophysical Services?

European Geophysical Services offers excellent and reliable field service coupled with many years of geophysical interpretation experience, efficient data processing and high-quality reporting. All our field operators are graduate geologists or geophysicists with data acquisition and interpretational experience able to give on site analysis and interpretations. For more information, please call 01939 210710.