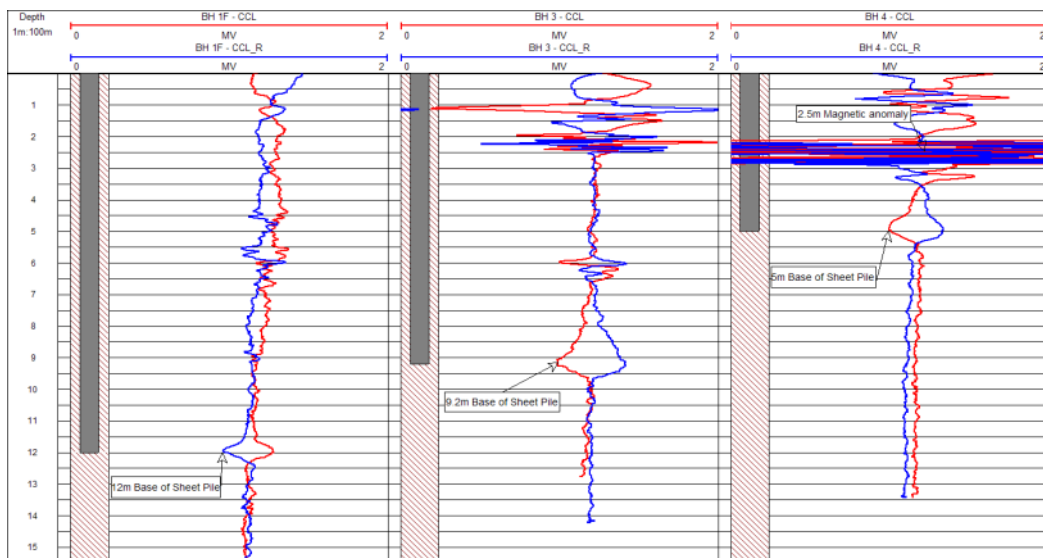
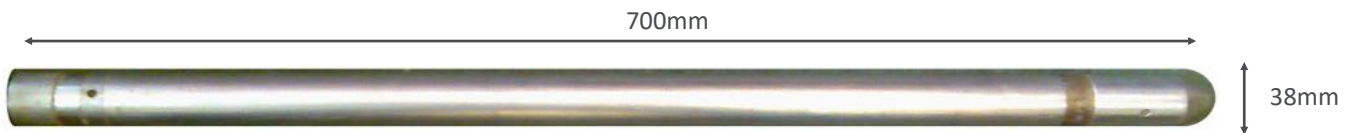




CASING COLLAR LOCATING TOOL

Tool overview

This tool measures changes in magnetic flux due to the presence of magnetic material and is used to determine the position of steel casing, its joints and other changes in the mass of magnetic material.



Depth to base of sheet piles measured with the CCL tool

Logging conditions

2–5m/min
Free running

Borehole Conditions

BH needs to be <0.5m from pile

Minimum diameter
50mm
Dry or fluid filled
Unlined, steel or plastic lined

Features and benefits

- Locates casing joints in boreholes
- Can be used alone or in combination with other tools

Specifications

Size	700 x 38mm
Weight	3.8kg
Max. temperature	80°C
Max.pressure	20MPa

Why European Geophysical Services?

European Geophysical Services offers excellent and reliable field service coupled with many years of geophysical interpretation experience, efficient data processing and high-quality reporting. All our field operators are graduate geologists or geophysicists with data acquisition and interpretational experience able to give on site analysis and interpretations. For more information, please call 01939 210710. or email office@europeangeophysical.com.