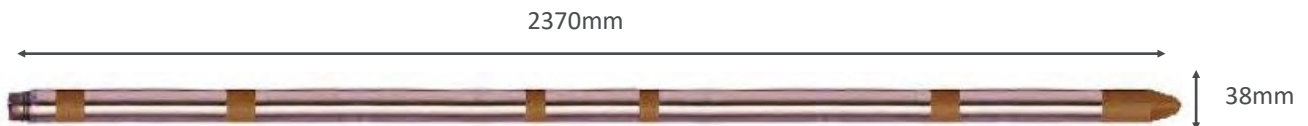




DUAL SPACED FOCUSED RESISTIVITY TOOL

Tool overview

This tool measures the resistivity of the material surrounding the borehole. The Focused Resistivity tool provides resistivity logs with finer vertical resolution and a deeper depth of investigation than a Normal Resistivity tool. Performance is also improved in higher conductivity mud, saline water and higher resistivity formations. The response of this log is a function of porosity, mineralogy and pore water quality. In metal lined boreholes the resistivity can give qualitative information on the condition of the casing and may be used to identify areas of increased corrosion or encrustation.

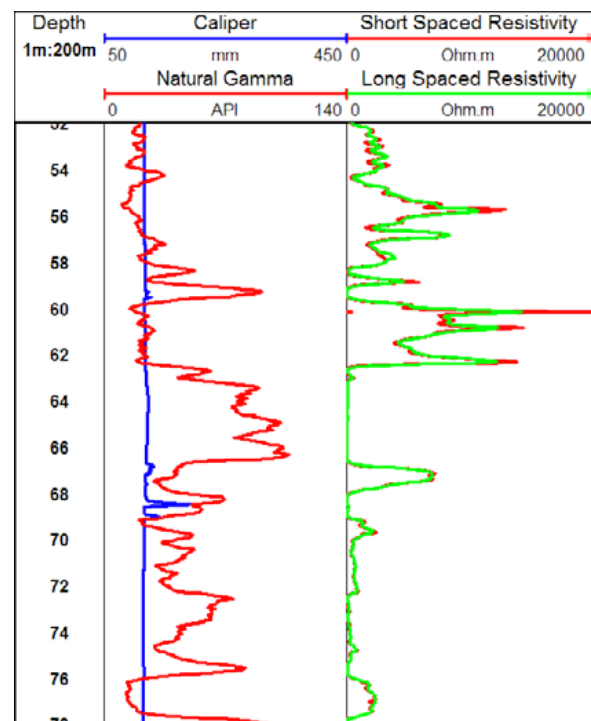


Features and benefits

- Compared to a Normal Resistivity tool the Focused Resistivity tool's performance is improved in high conductivity borehole fluids and higher resistivity formations. Furthermore the tool gives greater resolution in all borehole conditions

Logging conditions

4–9 m/min
Free running



Example focused resistivity tool log showing increased resolution over a normal resistivity tool

Specifications

Size	2370 x 38mm
Weight	7.0kg
Range	1 to 10,000 Ohm.m
Max. temperature	80°C
Max.pressure	20MPa

Why European Geophysical Services?

European Geophysical Services offers excellent and reliable field service coupled with many years of geophysical interpretation experience, efficient data processing and high-quality reporting. All our field operators are graduate geologists or geophysicists with data acquisition and interpretational experience able to give on site analysis and interpretations. For more information, please call 01939 210710 or email office@europeangeophysical.com.