

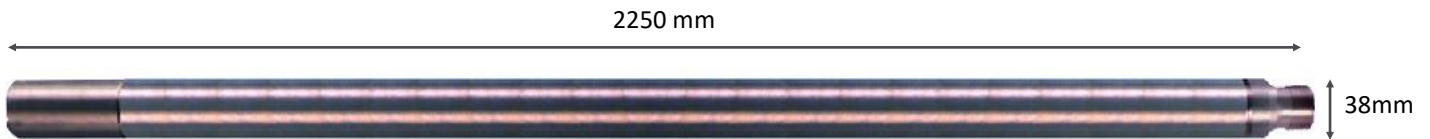


GAMMA-GAMMA (DUAL DENSITY) TOOL

Tool overview

This density tool has two detectors at different spacings from a source of gamma radiation. The logs from each detector indicate the apparent density of the material surrounding the tool at a radius of investigation related to the spacing. The Long Spaced Density detector (LSD) has a spacing of 48cm and the greatest depth of investigation.

The High Resolution Density detector (HRD) has a spacing of 24cm, this detector gives the greatest resolution but is more affected by borehole features such as linings and mud-cake.



Features and benefits

- Two detectors at different spacing
- Can be used in casing

Logging

Conditions

50-300mm*

2-5 m/min

Free running

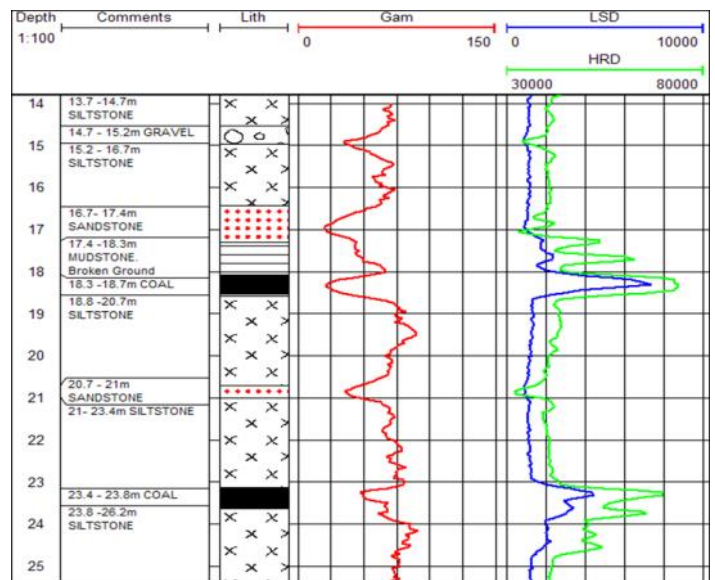
Borehole

Conditions

50-300mm*

Fluid filled or dry

Unlined or lined**



*For boreholes larger than 300mm this tool may be run side-walled with multiple runs around different sides of the borehole.

**In lined or cased sections of boreholes these logs give qualitative information on the density of the borehole.

Example formation investigation using dual density and natural gamma Logs through cased boreholes into old coal workings.

Specifications

Size	2250 x 38mm
Weight	12kg
Max. Temperature	80°C

Why European Geophysical Services?

European Geophysical Services offers excellent and reliable field service coupled with many years of geophysical interpretation experience, efficient data processing and high-quality reporting. All our field operators are graduate geologists or geophysicists with data acquisition and interpretational experience able to give on site analysis and interpretations. For more information, please call 01939 210710 or email office@europeangeophysical.com.