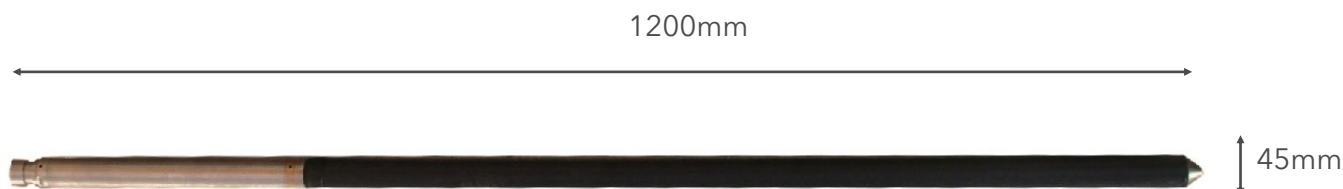




# MAGNETIC SUSCEPTIBILITY TOOL

## Tool overview

This is a two or three coil sonde designed to measure apparent formation magnetic susceptibility. The three coils system sonde allows for measurements in a wide range of formations. The dual spacing allows borehole and formation fluid properties to be investigated.



## Features and benefits

- Good results in right conditions
- Measures apparent formation magnetic susceptibility

### Logging conditions

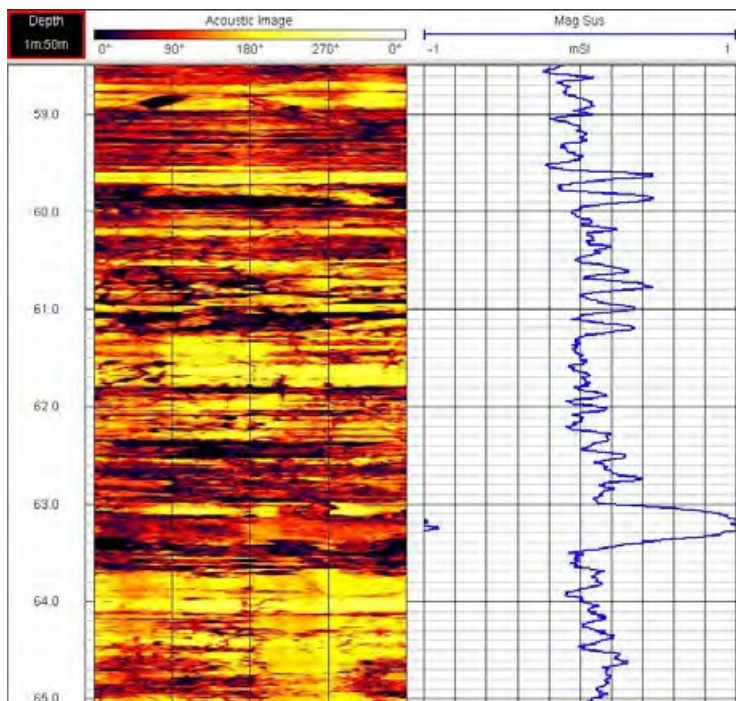
4–15/min

### Borehole Conditions

Minimum diameter  
60mm

Water filled

Unlined, steel or  
plastic screened



Formation evaluation using Acoustic Imager and Magnetic Susceptibility



## Specifications

Size	1200 x 45mm
Weight	5kg
Apparent Susceptibility Range	$10^{-5}$ – 0.5 S.I. Units
Resolution	1 Count
Transmitter Coil Frequency	2kHz

### Why European Geophysical Services?

European Geophysical Services offers excellent and reliable field service coupled with many years of geophysical interpretation experience, efficient data processing and high-quality reporting. All our field operators are graduate geologists or geophysicists with data acquisition and interpretational experience able to give on site analysis and interpretations. For more information, please call 01939 210710 or email [office@europeangeophysical.com](mailto:office@europeangeophysical.com).