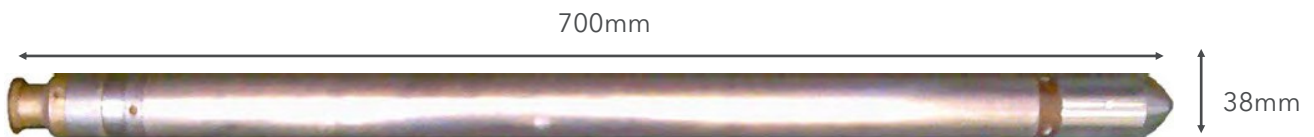




VERTICALITY TOOL

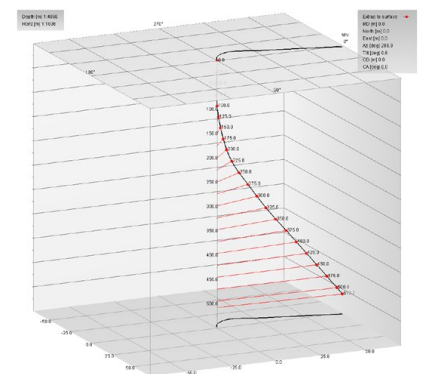
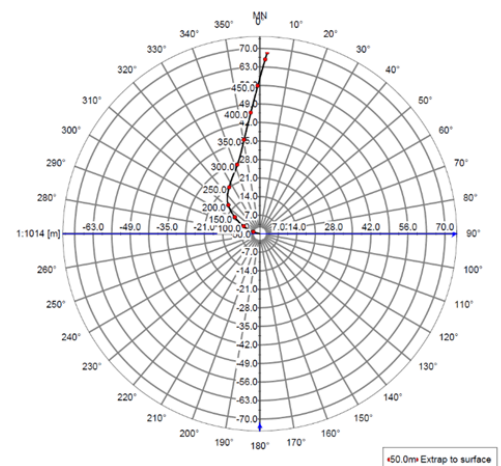
Tool overview

This tool employs a combination of magnetometers and inclinometers to measure the inclination/tilt and direction/azimuth of the borehole. The logging tool may be centralised or side-walled during data acquisition. The position of the borehole at any depth with respect to the log origin may be calculated in terms of X (West-East) and Y (SouthNorth) co-ordinates with the Z axis showing the true depth from origin. **The azimuth readings are influenced by the presence of steel within 1m of the borehole***. Therefore for accurate azimuth readings this tool must be run in unlined, plastic or stainless steel lined boreholes. **The inclination readings are unaffected by the presence of steel.**



Features and benefits

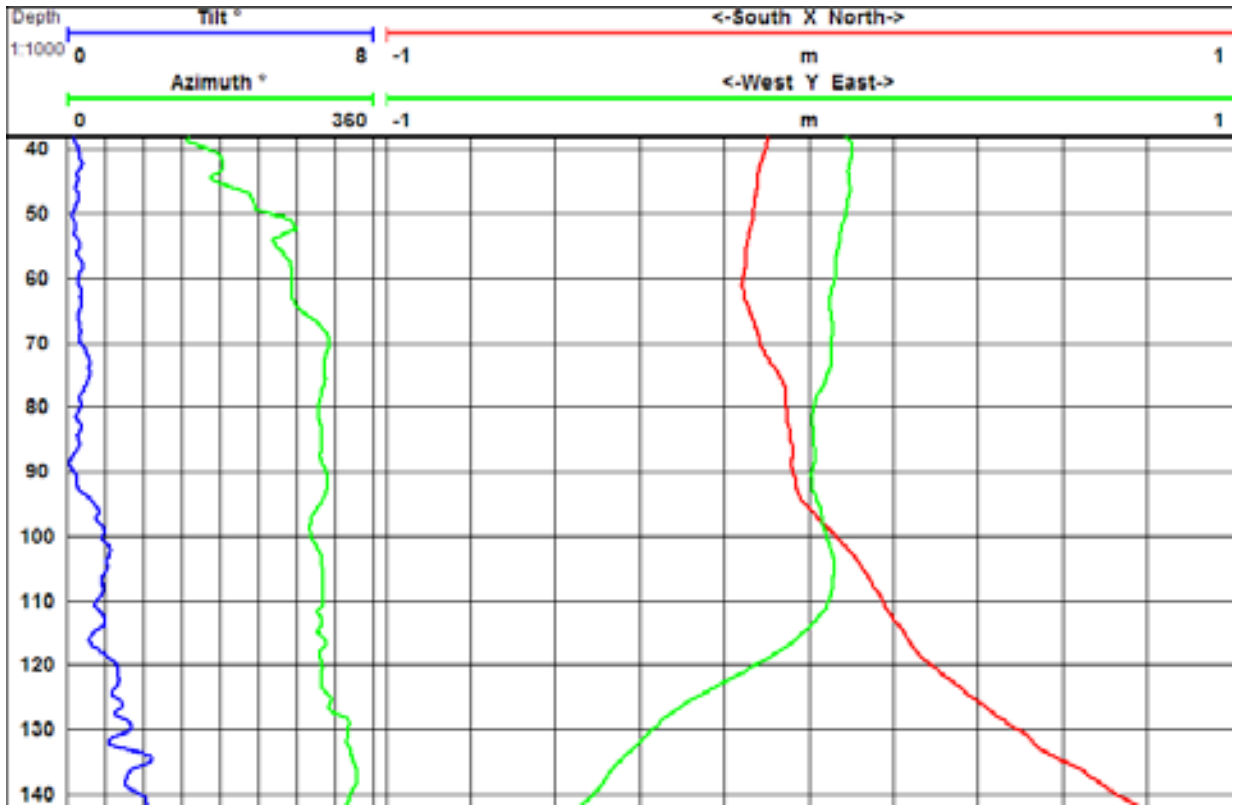
- Provides information on how straight borehole wall is
- Inclination readings unaffected by presence of steel



Logging conditions	Borehole Conditions
--------------------	---------------------

Shots taken at specified intervals	Minimum diameter 40mm
	Dry or fluid filled
	Unlined, plastic or steel* lined





Specifications

Size	700 x 38mm
Weight	8.5 kg
Tilt	0°–90°+/-0.2°
Azimuth	0°-360°+/-1°
Max.temperature	80°C

Why European Geophysical Services?

European Geophysical Services offers excellent and reliable field service coupled with many years of geophysical interpretation experience, efficient data processing and high-quality reporting. All our field operators are graduate geologists or geophysicists with data acquisition and interpretational experience able to give on site analysis and interpretations. For more information, please call 01939 210710.